

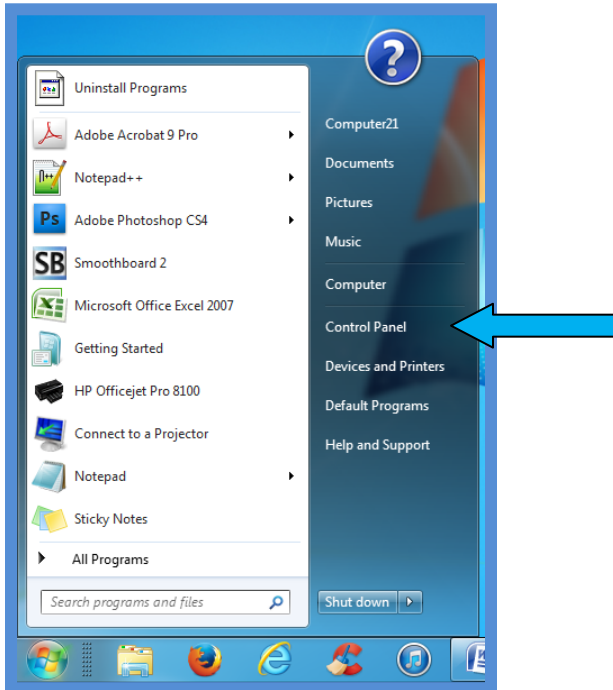
Change Display Settings Practice

1. Open the Control Panel

1. Click Start



2. Control panel

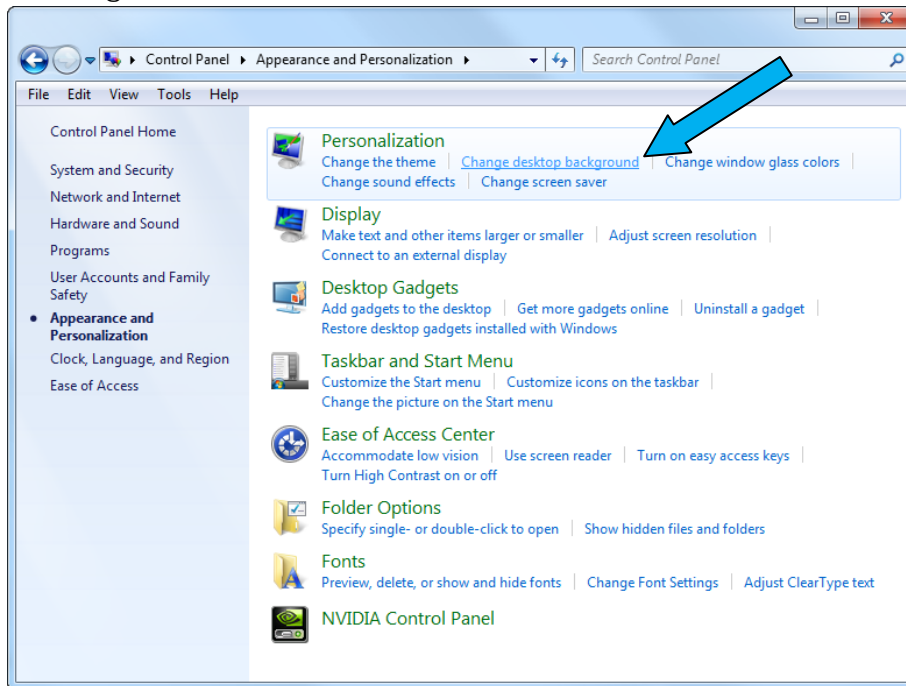


3. In the control panel click on the green text: **Appearance and Personalization**.

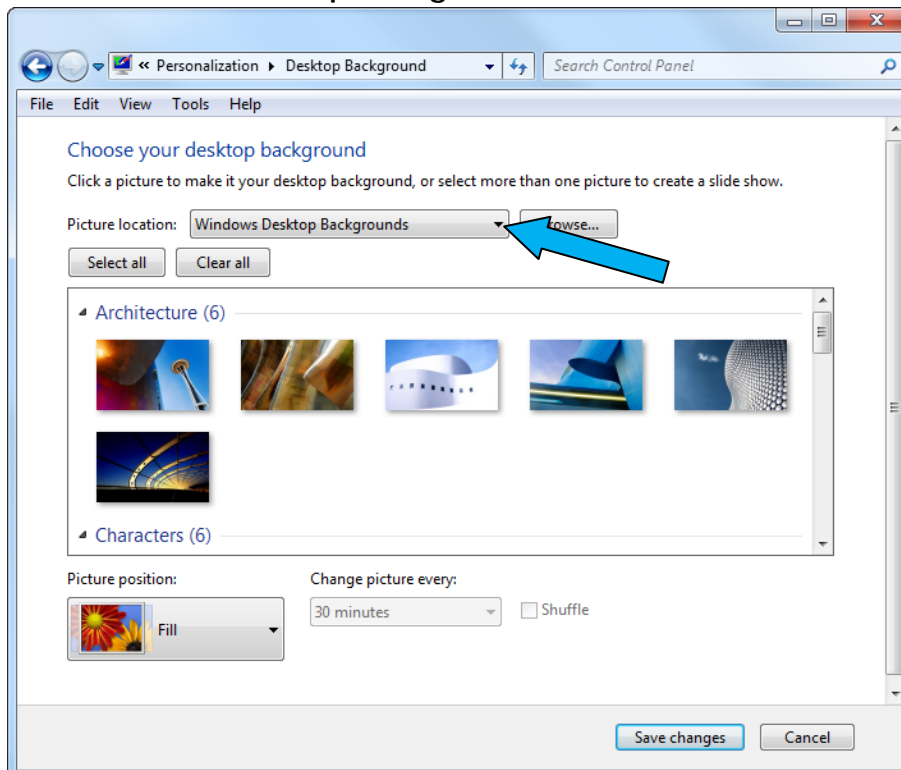


Change the Background Image of the desktop.

1. Select the **Change desktop background** option under the **Personalization** heading.

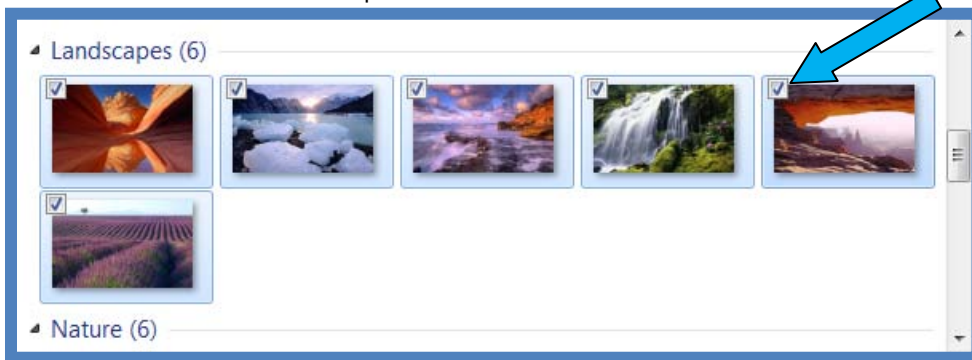


2. Select **Windows Desktop Backgrounds** from the Pictures location menu.

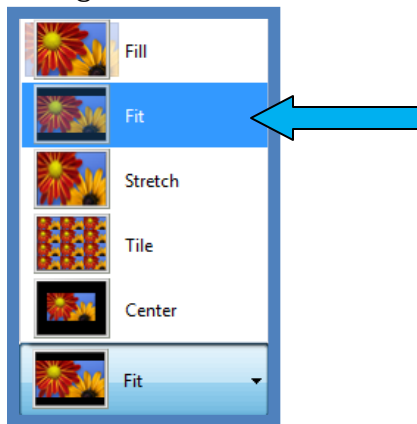


3. Select the **Clear all** button. This will make sure that none of the background pictures are selected.

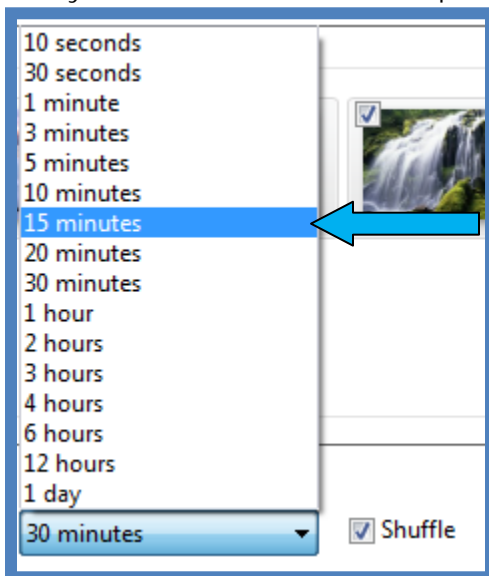
4. Select all of the images in the in the **Landscapes** section by clicking in the upper left hand corner of each picture.



5. Select **Fit** from the Picture position menu located near the bottom of the dialogue box.



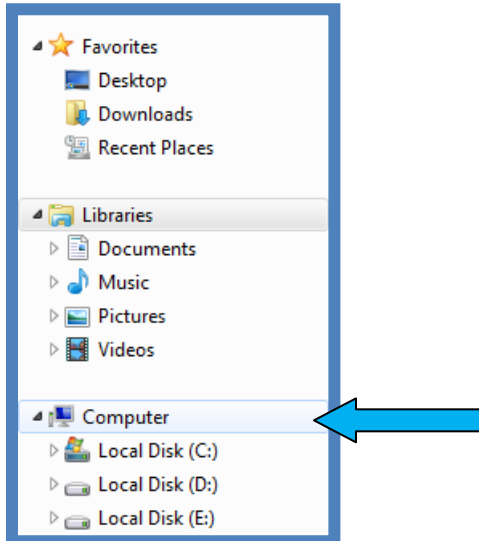
6. In the **Change picture every** menu, select 15 minutes.
7. Select the **Shuffle** check box. This will make the background picture change every 15 minutes to a random picture from the selected landscape pictures.



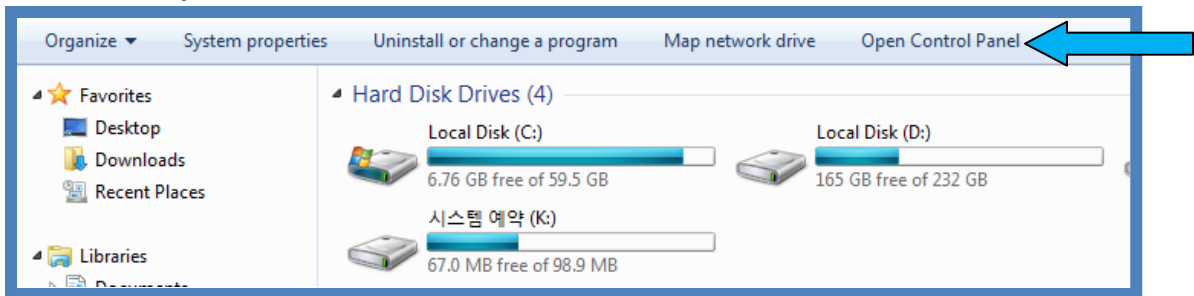
8. Select the **Save changes** button.
9. Close the control panel and view the changed background image of the desktop.

Change the Screen Saver

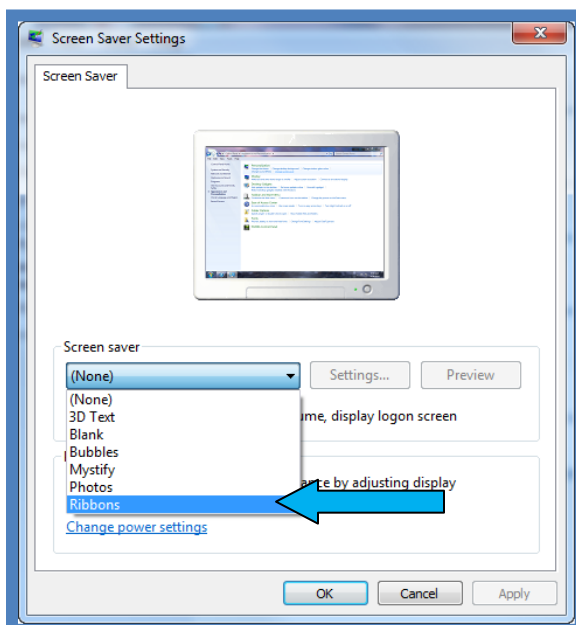
1. Select the **Windows Explorer** button located in the **Task Bar**.
2. Select computer in the **Navigation pane**.



3. Select the **Open Control Panel** button located in the **Command Bar**.



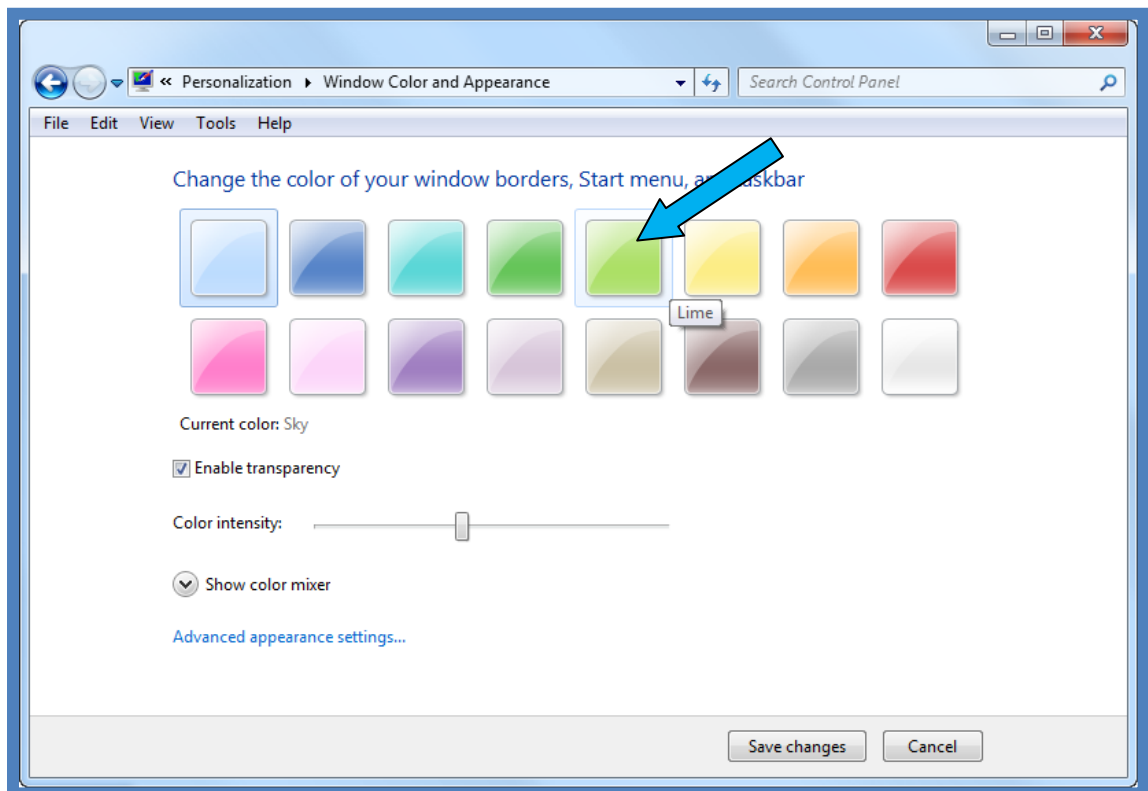
4. In the control panel click on the green text **Appearance and Personalization**.
5. Select the **Change Screen Saver** option under the **Personalization** heading.
6. Select **Ribbons** from the Screen saver drop down list.



7. Change the wait time to **33 minutes** by clicking in the box next to the **Wait** option and typing 33.
8. Click the **Preview** button to view a preview of the Ribbons screen saver.
9. Click the **Apply** button to apply the changes that you made to the screen saver.

Change the Windows Glass Color

1. Select the **Change Windows Glass Colors** option under the **Personalization** heading.
2. Select the **Lime** color box from the available colors.



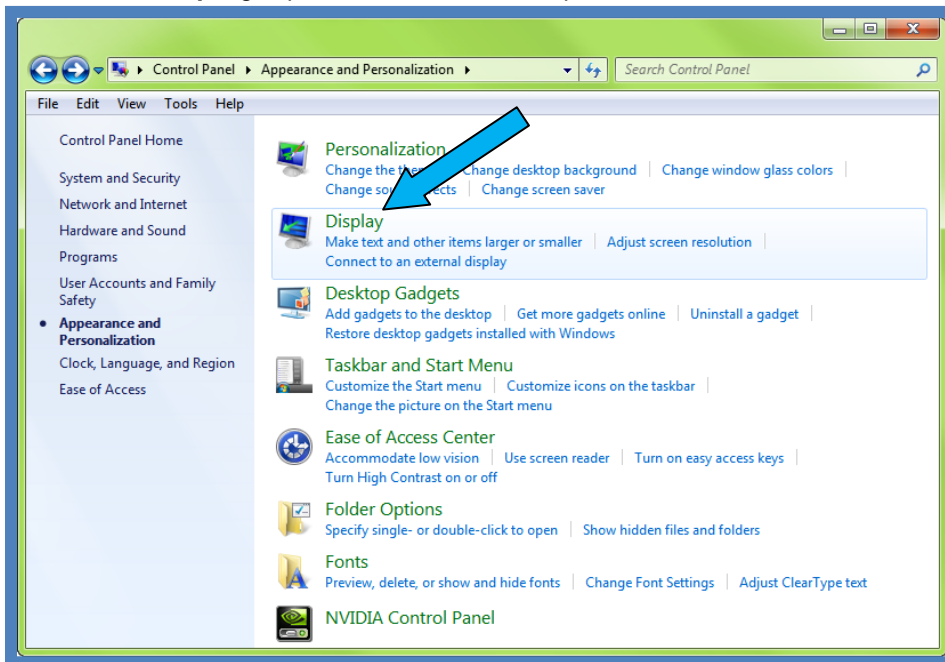
3. Notice how the border color of your dialogue box has changed to the lime color.
4. Deselect the **Enable transparency** button by clicking on the checkbox. Notice that the borders of dialogue box change from transparent to not transparent.
5. Reselect the Enable transparency box by clicking in the checkbox to turn the transparency back on.
6. Select the slider in the **Color intensity** option and slide it all the way to the right and then all the way to the left. Notice how the color of border changes as you move slider.
7. Move the slider all the way to the left to have the highest color intensity.



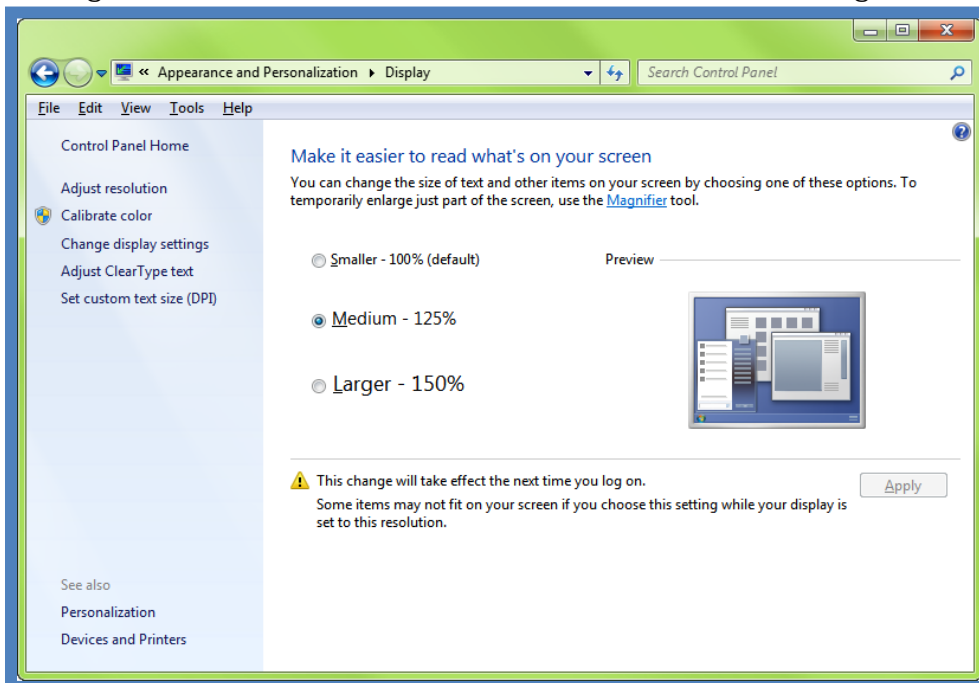
8. Select the **Save changes** button.

Change the Font Size of the Computer

1. Select the **Display** option in the control panel.

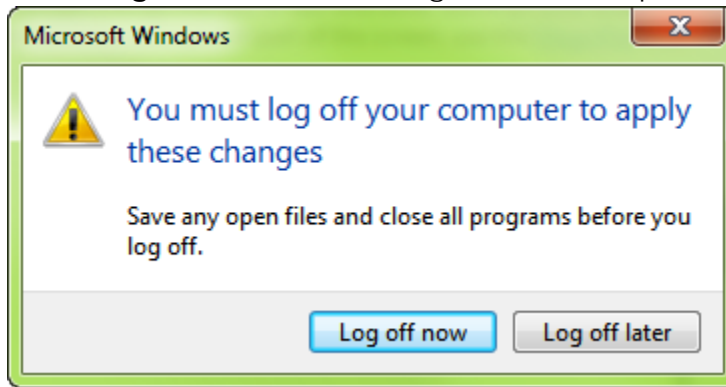


2. Change the font size to Medium – 125% as shown in the image below:



3. Select **Apply** to apply the changes that you made.

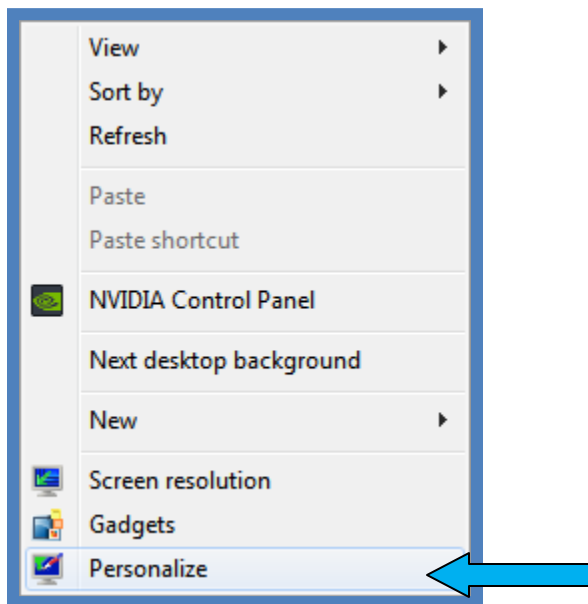
4. Select **Log off now** in the dialogue box that opens.



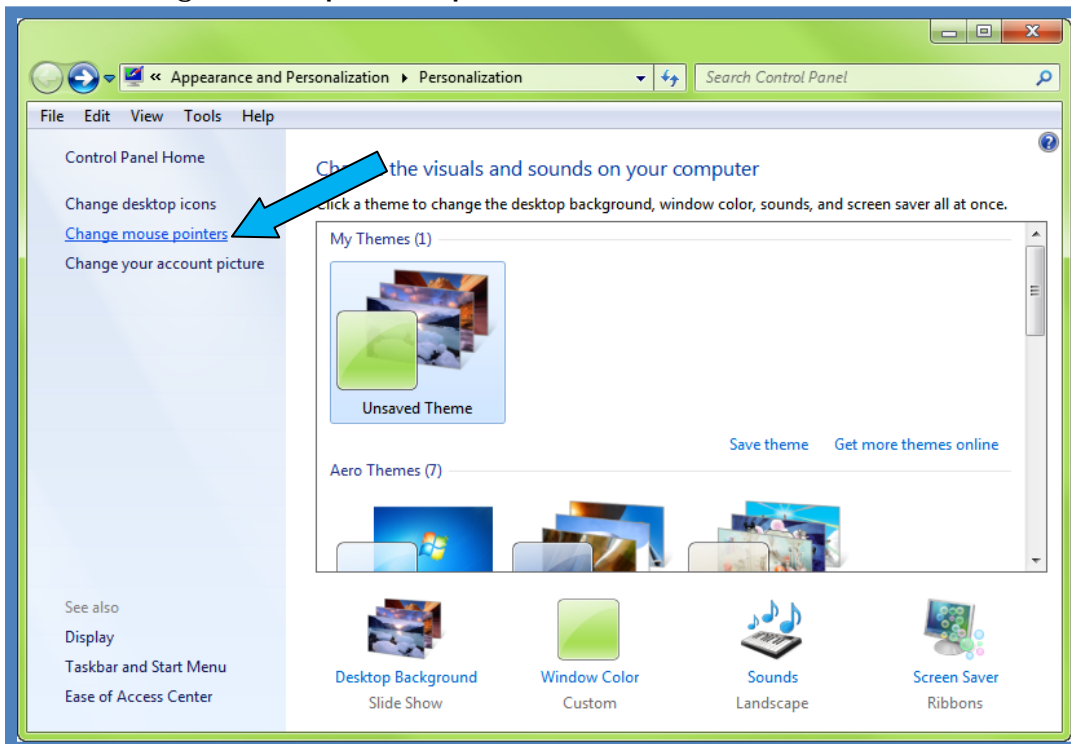
5. Log back into your account and notice how the size of the text on the desktop has changed.

Change the Mouse Pointer

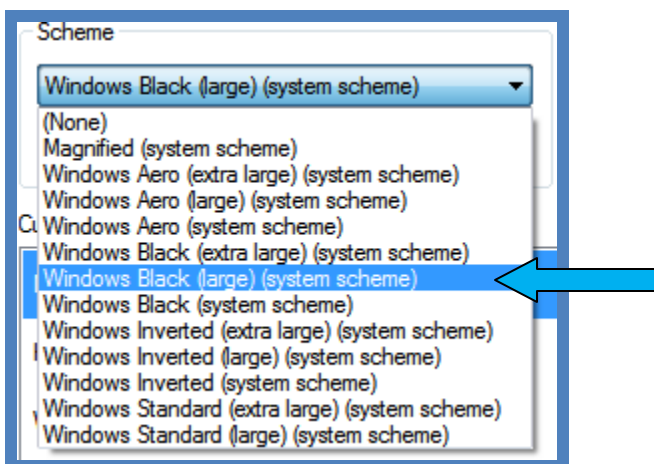
1. Right click an empty area of the desktop.
2. Select **Personalize** from the menu.



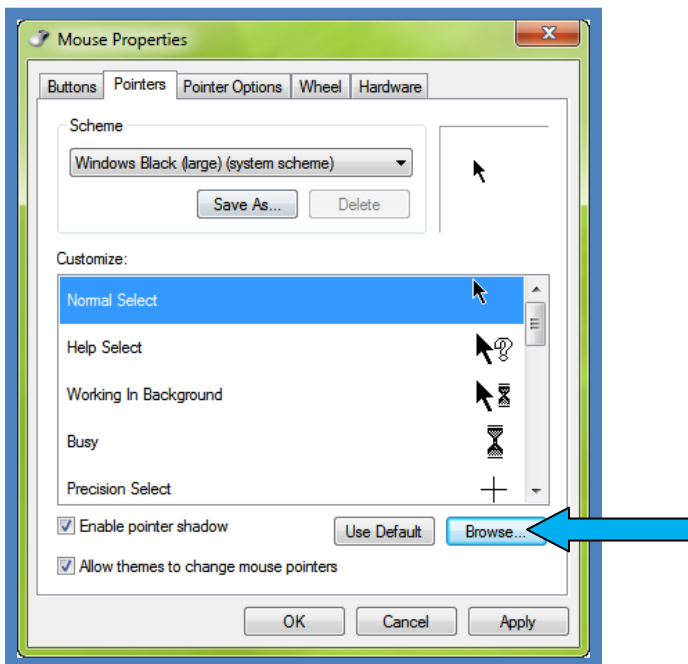
3. Select change **Mouse pointer option** from the menu.



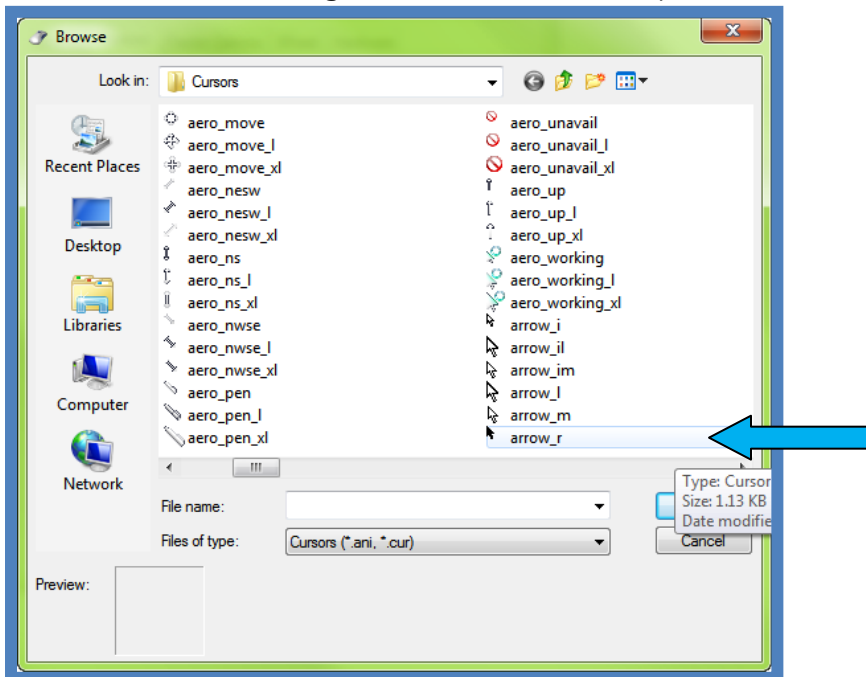
4. Select the **Windows Black (large) (system Scheme)** from the Scheme drop down list.



- Click the **Browse** button located at the bottom of the Mouse Properties dialogue box.



- Select the arrow_r image from the available options.



- Select **Open**.
- Select **Apply** to apply the changes that you made.
- Notice how your mouse pointer has changed. Move the mouse around the screen to notice how the pointer has changed.
- Select the **Windows Aero (system Scheme)** from the Scheme drop down list to reset the pointers back to the Windows 7 defaults.
- Select **Apply** and then **OK** to exit the dialogue box.
- Exit the Control Panel because you are finished!